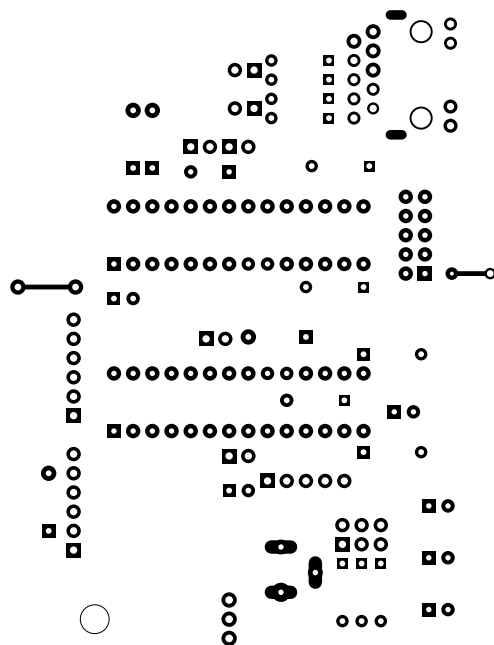
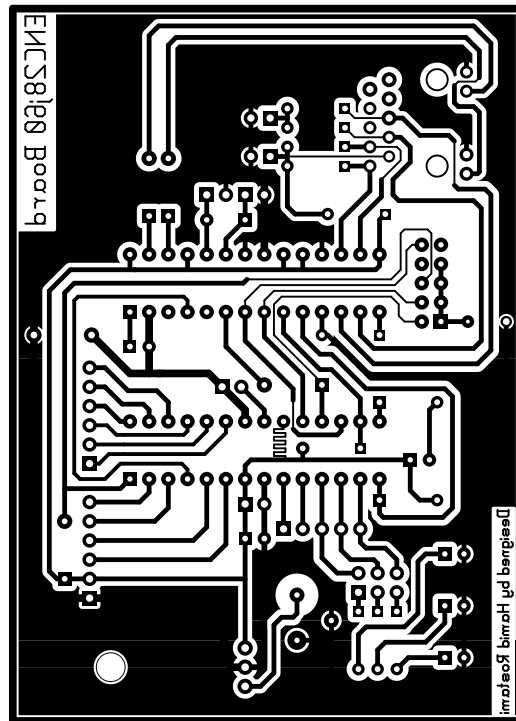
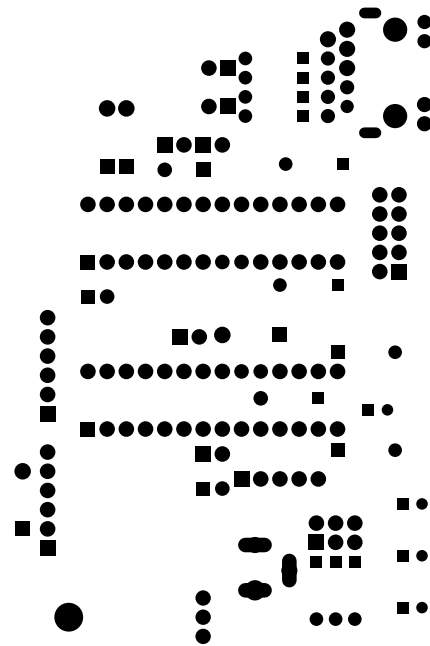
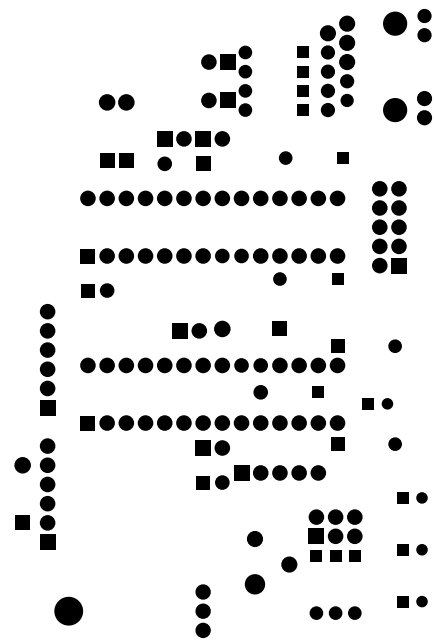


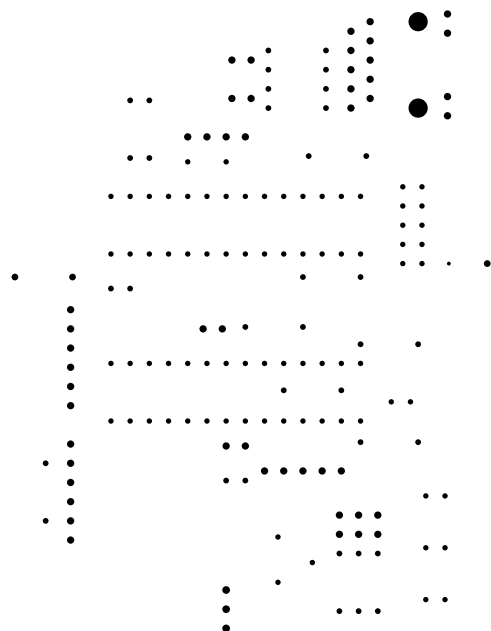
2. component
3. solder
4. componentmask
5. soldermask
6. plated-drill
7. unplated-drill
8. topsilk
9. bottomsilk
10. toppaste
11. topassembly
12. bottomassembly
13. fab



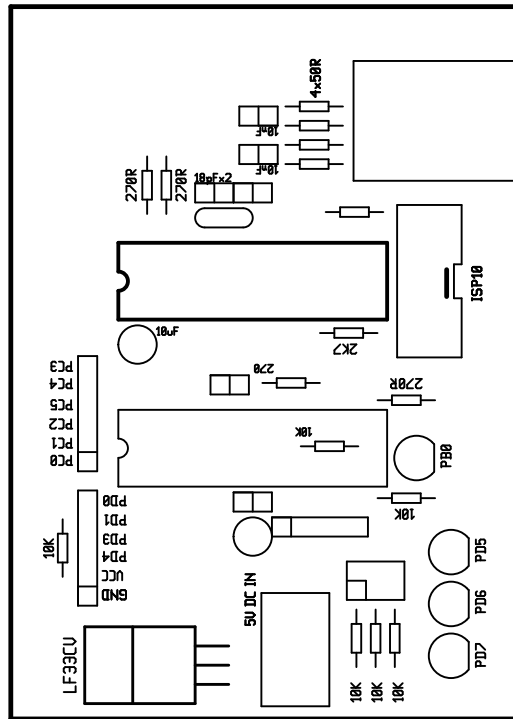








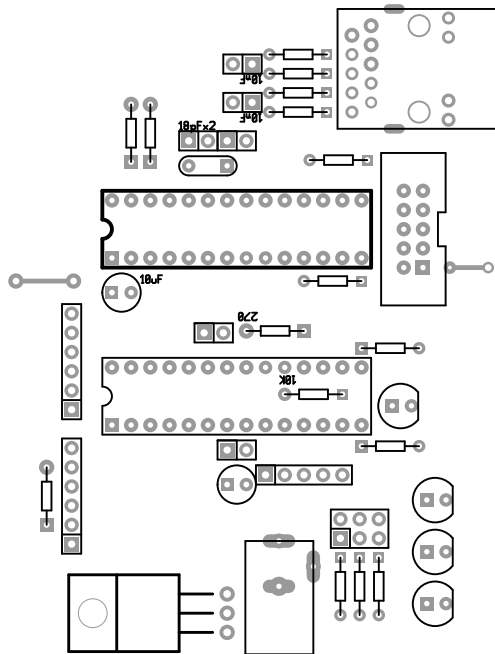


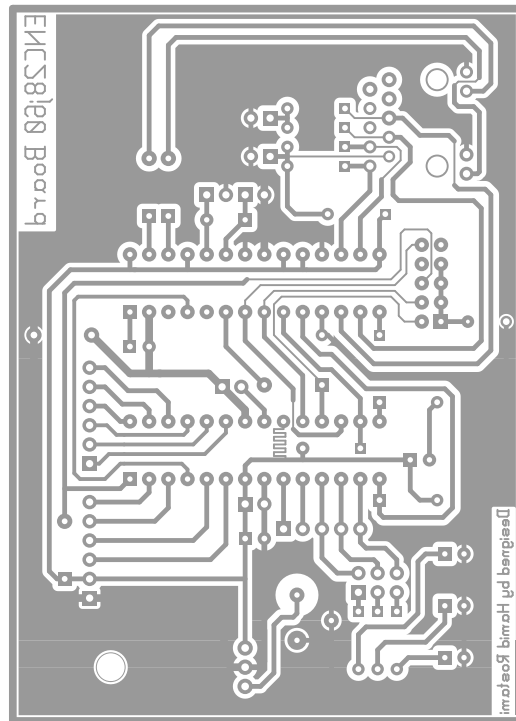


-

-

二

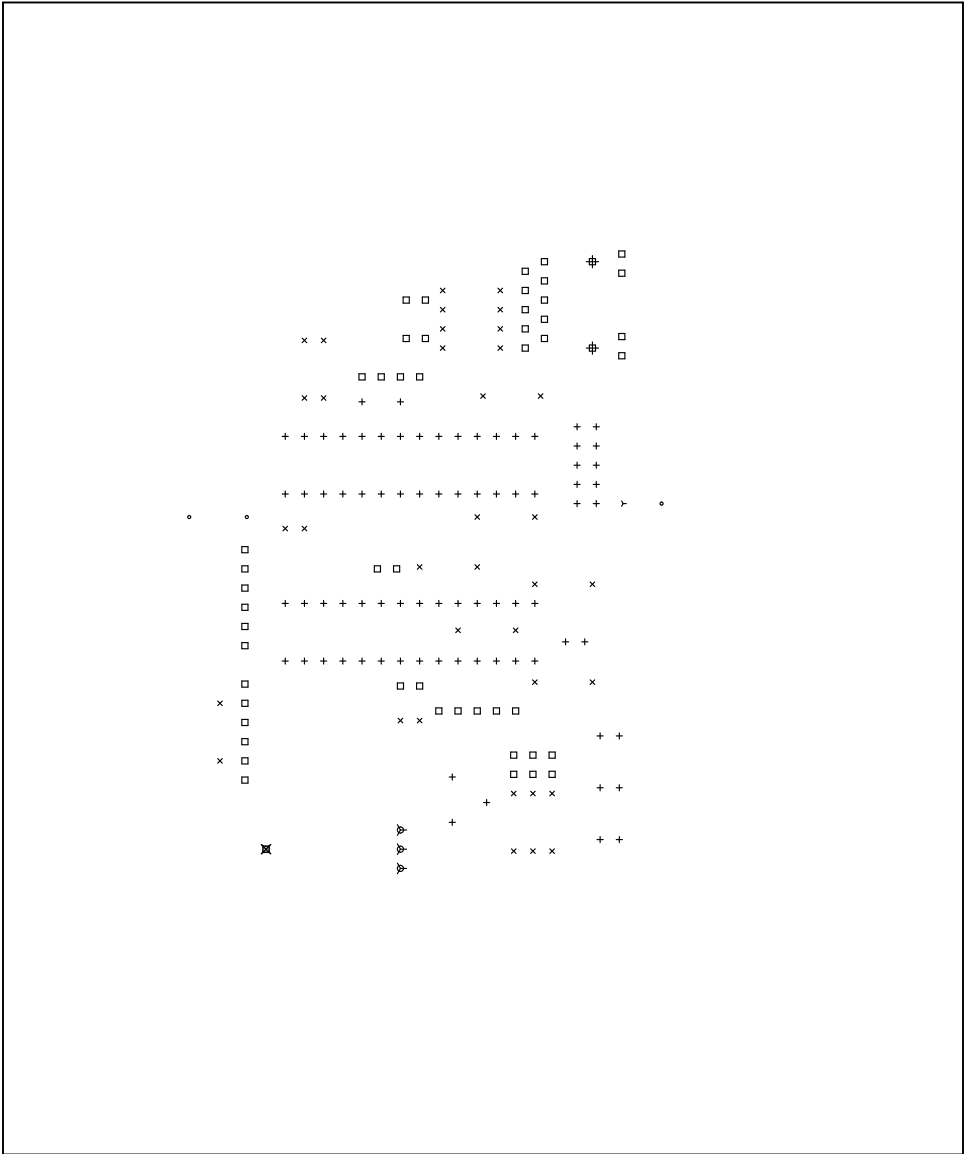




There are 8 different drill sizes used in this layout, 174 holes total

| Symbol | Diam. (Inch) | Count | Plated? |
|--------|--------------|-------|---------|
| γ | 0.020 | 1 | YES |
| + | 0.028 | 79 | YES |
| x | 0.030 | 36 | YES |
| • | 0.035 | 3 | YES |
| □ | 0.038 | 49 | YES |
| ▽ | 0.040 | 3 | YES |
| ⊕ | 0.100 | 2 | YES |
| ⊗ | 0.150 | 1 | NO |

Title: (unknown) - Fabrication Drawing
Author: Hamid Rostami
Date: Sat 20 Feb 2010 03:32:06 AM GMT UTC
Maximum Dimensions: 6000 mils wide, 5000 mils high



Board outline is the centerline of this 10 mil rectangle - 0,0 to 6000,5000 mils